



MATER DEI SCHOOL

CLASS XI HOLIDAY HOMEWORK

CLASS	SUBJECT
English	<ol style="list-style-type: none">1. Cut and paste three newspaper articles for note-making and abstracting.2. Do a brief research on the Life of King Tut.3. Watch the documentary 'Home' (https://youtu.be/ZjE9T-KQZOU) and write an article on the same.(150-200 words)4. Meera Ranjan is a resident of 27 ,Ram Vihar, Pune-110029. She writes a letter to the editor of The Hindustan Times ,New Delhi giving her strong views on the disadvantages of setting up a chemical factory project in the country and makes an appeal to the Central Government to reconsider its decision , as it will worsen the environment of the city .(150-200 words)5. Read the newspaper daily.
Physics	<p>Q1. A man releases a stone at the top edge of a tower. During the last second of its travel, the stone falls to a distance of $\frac{9}{25}H$, where H is the tower's height. Find H.</p> <p>Q2. Raindrops fall 1800 from a cloud to the ground. (a)If they were not slowed by air resistance, how fast would the drops be moving when they struck the ground? Would it be safe to walk outside during a rainstorm?</p> <p>Q3. A hot air balloon is ascending at the rate of 12m/s and is 80 m above the ground when a package is dropped over the side (a) How long does the package take to reach the ground? (b)With what speed does it hit the ground?</p> <p>Q4. A skier leaves a ski jump with the horizontal velocity of magnitude 29.4m/s. The instant before the skier lands 3.00 seconds later, what are the</p>

magnitudes of the (a)horizontal and (b)vertical components of her velocity?

Q5. A melon is dropped from a height of 39.2m. After it crosses through half that distance, the acceleration due to gravity is reduced to zero by a air drag. With what velocity does the melon hit the ground?

Q6. A key falls from a bridge that is 45 metre above the water. It falls directly into a model boat, moving with constant velocity, that is 12 m from the point of impact when the key is released . What is the speed of the boat?

Q7. A stone is dropped into a river from a bridge 53.6 metre above the water . Another stone is thrown vertically down 1 second after the first is dropped. The stones strike the water at the same time. (a)What is the initial speed of the second stone?(b)Plot velocity versus time on a graph for each stone, taking zero time as the instant the first stone is released.

Q8. To test the quality of a tennis ball, you drop it onto the floor from a height of 4 m. It rebounds to a height of 2 m. If the ball is in contact with the floor for 12 millisecond, (a)What is the magnitude of its average acceleration during that contact and (b)Is the average acceleration up or down?

Q9. An object falls a distance h from rest. If it travels 0.6 h in the last one second, find (a) the time (b) the height of its fall (c) Explain the physically unacceptable solution of the quadratic equation into that you obtain.

Q10. A rock is thrown vertically upward from ground level at time $t=0$. At $t=1.5$ s, it passes the top of a tall tower, and 1 se later it reaches its maximum height. What is the height of the tower?

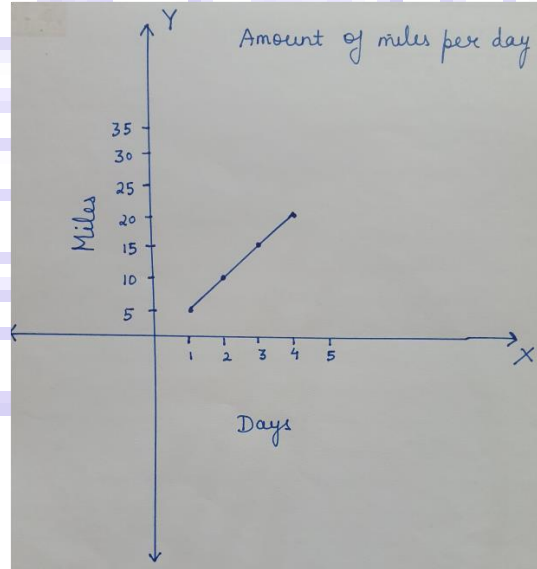
Mathematics

General Instructions:

1. Holiday homework to be done in A-4 white sheets with your name , roll no. and class mentioned clearly on the front top right side of the sheet.
2. Questions to be done in same order as given.
3. **Date of submission: 2nd July 2019.**

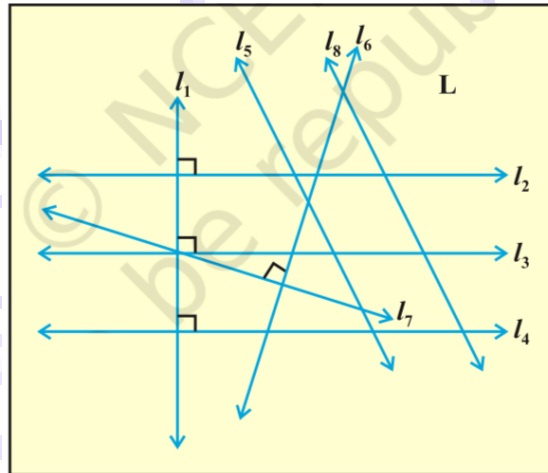
.....
.....

1. Give an example of an application of function in real life. Also draw its graph.
2. Give an example of an application of exponential function , logarithmic function and greatest integer function in real life.
3. A student is keeping a log of the amount of miles he runs everyday. If he runs 5 miles per day, how many total miles he will have to run at the end of 4 days? The graph of the above problem is



Write the equation (function) for the above graph.

4.



- a) To verify that the relation R in the set L of all lines in a plane , defined by $R = \{(l, m) : l \text{ is perpendicular to } m\}$ satisfies the condition
- (i) $(l, l) \in R$ for all $l \in L$
 - (ii) $(l, m) \in R$ implies $(m, l) \in R$ for all $l, m \in L$
 - (iii) $(l, m) \in R$ and $(m, n) \in R$ doesn't imply $(l, n) \in R$ for all $l, m, n \in L$

	<p>b) To verify that the relation R in the set L of all lines in a plane, defined by $R = \{(l, m) : l \text{ is parallel to } m\}$ satisfies the condition</p> <p>(i) $(l, l) \in R$ for all $l \in L$</p> <p>(ii) $(l, m) \in R$ implies $(m, l) \in R$ for all $l, m \in L$</p> <p>(iii) $(l, m) \in R$ and $(m, n) \in R$ implies $(l, n) \in R$ for all $l, m, n \in L$</p> <p>5. To minimise the cost of the food, meeting the dietary requirements of the adolescent students of your school.</p> <p>Task to be done</p> <p>(i) Make a survey of at least 100 students to find which items they consume on a daily basis.</p> <p>(ii) Select two food items constituting one cereal and one pulse.</p> <p>(iii) Find from a dietician the minimum requirement of protein for an adolescent and also find the content of protein in 1 kg. of selected cereal and pulse respectively.</p> <p>(iv) Find the minimum cost of the selected cereal and pulse.</p>
<p>Chemistry</p>	<p>Solve the following chapter based assignments on A4 sheets or assignment sheets. Please refrain yourself from doing them in notebooks / registers.</p> <p>CHAPTER- 1 SOME BASIC CONCEPTS OF CHEMISTRY</p> <ol style="list-style-type: none"> 1. What is chemistry? 2. How has chemistry contributed towards nation's development? 3. State law of definite proportions. 4. State Avogadro's law. 5. How is matter classified at macroscopic level? 6. Classify following substances as element, compounds and mixtures – water, tea, silver, steel, carbon dioxide and platinum. 7. How can we separate the components of a compound? 8. How are physical properties different from chemical properties? 9. Define one atomic mass unit (amu). 10. What is the value of one mole? 11. Calculate the number of molecules present in 0.5 moles of CO_2?

12. 1L of a gas at STP weighs 1.97g. What is molecular mass?
13. What is stoichiometry?
14. The substance which gets used up in any reaction is called -----
15. What is 1molal solution?
16. What does the following prefixes stand for –
(a) pico (b) nano (c) centi (d) deci
17. Explain law of multiple proportions with an example.
18. Write Postulates of Dalton's atomic theory.
19. Calculate molecular mass of –
 C_2H_6 , $C_{12}H_{22}O_{11}$, H_2SO_4 , H_3PO_4
20. What is formula mass?
21. Give one example each of a molecule in which empirical formula and molecular formula are (i) same (ii) Different.
22. Write empirical formula of following –
 CO , Na_2CO_3 , KCl , C_6H_{12} , H_2O_2 , H_3PO_4 , Fe_2O_3 , N_2O_4
23. Calculate the number of moles in the following masses –
a) 7.85g of Fe
b) 7.9mg of Ca
24. How much potassium chlorate should be heated to produce 2.24L of oxygen at NTP?
25. Write an expression for molarity and molality of a solution.
26. Calculate the weight of lime (CaO) obtained by heating 2000kg of 95% pure lime stone ($CaCO_3$).

CHAPTER-2 STRUCTURE OF ATOM

1. Define quantum.
2. States Heisenberg's Uncertainty Principle.
3. Give the de – Broglie's relation.
4. Which orbital is non – directional?
5. What is the meaning of quantization of energy?
6. Why is energy of 1s electron lower than 2s electron?
7. Which quantum number determines (i) energy of electron (ii) Orientation of orbitals?
8. What is nodal surface or nodes?
9. How many spherical nodal surfaces are there in 4s sub-shell?
10. Give the mathematical expression of uncertainty principle.
11. Why cannot the motion of an electron around the nucleus be determined accurately?
12. Calculate the uncertainty in the momentum of an electron if it is confined to a linear region of length 10×10^{-10} m.

13. Calculate the uncertainty in the velocity of a wagon of mass 4000kg whose position is known accurately of $\pm 10\text{m}$.
14. Arrange the electrons represented by the following sets of quantum number in decreasing order of energy:
 - a) $n = 4, l = 0, m = 0, s = +1/2$
 - b) $n = 3, l = 1, m = 1, s = -1/2$
 - c) $n = 3, l = 2, m = 0, s = +1/2$
 - d) $n = 3, l = 0, m = 0, s = -1/2$
15. What designations are given to the orbitals having (i) $n = 2, l = 1$ (ii) $n = 2, l = 0$ (iii) $n = 4, l = 3$ (iv) $n = 4, l = 2$ (v) $n = 4, l = 1$?
16. Write the electronic configuration of (i) Mn^{4+} , (ii) Fe^{3+} (iii) Cr^{2+} and Zn^{2+} . Mention the number of unpaired electrons in each case.

CHAPTER-3 CLASSIFICATION OF ELEMENTS AND PERIODICITY IN PROPERTIES

1. State the modern 'Periodic law'?
2. Give the general characteristics of the long form of Modern periodic table?
3. In short give the features of the seven periods.
4. Define electronic configuration.
5. What is the electronic configuration when elements are classified groupwise?
6. Give the main features of s-block elements.
7. Give the main features of p-block elements.
8. Give the main features of d-block elements.
9. Give the main features of f-block elements.
10. Predict the position of the element in the periodic table satisfying the electronic configuration $(n-1) d^1 ns^2$ for $n=4$
11. How does atomic size change in a group?
12. Why Li and Mg show resemblance in chemical behavior?
13. The atomic radius of elements decreases along the period but Neon has highest size among III period element? Why?
14. Explain why cations are smaller and anions are larger in radii than their parent atom?
15. Define ionization enthalpy and electron gain enthalpy?
16. How does atomic size change in a group?
17. The size of an atom can be expressed by three radii. Name them. Which of these given the highest, and the lowest value of the atomic radius of an element?
18. Among the elements B, Al, C and Si

	<p>(a) Which has the highest first ionization enthalpy? (b) Which has the largest atomic radius?</p> <p>19. Na⁺ has higher value of ionization enthalpy than Ne, though both have same electronic configuration.</p> <p>20. Define valency.</p> <p>21. How does valency vary in a group and period in the periodic table?</p> <p>22. What is the valency of noble gases?</p> <p>23. How do metals react in a period?</p> <p>24. How do metals react in a group?</p> <p>25. How does the reactivity of non-metals changes in a period and group?</p> <p>26. Give the properties of the oxides in a particular period.</p> <p>27. What is an amphoteric oxide?</p> <p>28. Define a neutral oxide.</p> <p>29. Why does lithium form covalent bond unlike other alkali which forms ionic bond?</p> <p>30. What is the general outer electronic configuration of f – block elements?</p> <p>31. Why do Na and K have similar properties?</p> <p>32. Arrange the following elements in the increasing order of metallic character : Si, Be, Mg, Na, P.</p> <p>33. The atomic number of an element is 16. Determine its position in accordance to its electronic configuration.</p> <p>34. Why are elements at the extreme left and extreme right the most reactive?</p> <p>35. Why the ionization enthalpy does gradually decreases in a group?</p> <p>36. Why does electronegativity value increases across a period and decreases down period?</p> <p>37. How does electronegativity and non – metallic character related to each other?</p>
<p>Biology</p>	<p><u>General Instructions :</u></p> <ol style="list-style-type: none"> 1. Holiday work consists of one assignment and preparation of Herbarium. 2. Assignment to be submitted on July 3 and Herbarium on July 4. 3. Assignments are to be done on A-4 size sheets and Herbarium in Herbarium sheets. 4. Ensure the neatness of your work. 5. Answer the question according to the marks. 6. Use only blue and black pen. For headings sketch pens can be used. 7. Colourful diagrams can be drawn but avoid using ribbons, glitter pens, etc.

ASSIGNMENT

- a) While digging the soil, you find a tuberous, swollen part. How would you identify whether it is stem or root? (1)
- b) What kind of root modifications are found in the following? (1 each)
a) Banyan b) Maize c) Mangrove plants d) Carrot
- c) Give reason for the following:
- Growth and reproduction cannot be the defining property of the living organisms. (2)
 - Archae bacteria are able to survive in extreme conditions like hot Sulphur springs. (2)
 - Underground parts of a plant are not always root. (2)
 - Brown algae are brown. (2)
- d) Draw a labelled diagram of bacteriophage and explain the structure? (3)
- e) Draw a labelled diagram of structure of monocot seed and explain? (3)
- f) Draw the labelled diagram of blue green algae, state its characteristic feature and explain the term 'algal bloom'? (5)
- g) Draw a labelled diagram of funaria. Mention the ploidy of the following : protonemal cell of a moss, leaf cell of a moss, gemma cell in Marchantia, ovum of a liverwort? (5)
- h) A student of class XI feels that the introduction of plant morphology in his syllabus is to load his mind with many technical terms and botanical names. His teacher tells him that studying morphology has several traditional values and is of economic importance. List any 3 advantage of studying it. What value is being shown by the teacher? (5)
- i) Explain haplo-diplontic, haplontic and diplontic cycles with diagram? (3 marks each)

➤ **Prepare a herbarium - thirty different leaves.**

- i. Neatly present the leaf/leaves in the herbarium sheet.
- ii. Use cello-tape to fix the leaf rather than fevicol.
- iii. Mention the generic name and common name.
- iv. Paste atleast 30 leaves.

Make a project in the following mentioned topics:

Suggestive List of Projects:

- | | |
|------------------------|------------------------|
| • Effect on PPC due to | • Invisible Hand (Adam |
|------------------------|------------------------|

Economics	<p>various government policies</p> <ul style="list-style-type: none"> • Opportunity Cost as an Economic Tool • Effect on equilibrium Prices in Local Market • Solar Energy, a Cost Effective Comparison with Conventional Energy Sources • Any other newspaper article and its evaluation on basis of economic principles 	<p>Smith)</p> <ul style="list-style-type: none"> • Effect of Price Change on a Substitute Good (taking prices from real life visiting local market) • Effect of Price Change on a Complementary Good (taking prices from real life visiting local market) • Bumper Production- Boon or Bane for the Farmer • Any other topic 	
<p><u>Mode of presentation/submission of the Project:</u></p> <p>At the end of the stipulated term, each learner will present the research work in the Project File to the External and Internal examiner. The questions should be asked from the Research Work/ Project File of the learner. The Internal Examiner should ensure that the study submitted by the learner is his/her own original work. In case of any doubt, authenticity should be checked and verified.</p> <p><u>Expected Checklist:</u></p> <p>Introduction of topic/title</p> <p>Identifying the causes, consequences and/or remedies</p> <p>Various stakeholders and effect on each of them</p> <p>Advantages and disadvantages of situations or issues identified</p> <p>Short-term and long-term implications of economic strategies suggested in the course of research</p> <p>Validity, reliability, appropriateness and relevance of data used for research work and for presentation in the project file</p>			

	<p>Presentation and writing that is succinct and coherent in project file</p> <p>Citation of the materials referred to, in the file in footnotes, resources section, bibliography etc.</p>
<p>Computer Science</p>	<ol style="list-style-type: none"> 1. Being a Computer Science student, it is important for you to know about different inventors/ developers in the world of technology. Research on any one of the following mentioning their achievements and contributions in the field of technology. <ol style="list-style-type: none"> a. Charles Babbage b. Steve Jobs c. Bill Gates d. Steve Wozniak e. Bjarne Stroustrup 2. Solve the assignment given in the class.
<p>Sociology</p>	<ol style="list-style-type: none"> 1 Primary data for the project topic has to be collected over the holidays. (To follow instructions as explained in the class).The questionnaire is to be sent for approval prior to proceeding with the data collection. 2) Each student needs to introduce her topic briefly through a PowerPoint presentation/a recorded interview/a collage/ a skit, etc. Students are expected to be creative in introducing their research topic. 3) For any movie you watch or any book you read during the holidays, look at it from a Sociologist's perspective and understand the way women are portrayed, the stereotyping projected, the types of groups shown and the values stated.
<p>Psychology</p>	<p>Task: The first chapter tells you about the several professionals in the field of Psychology Contact a psychologist who fits into one of the categories and interview them (you may interview a counselor also). Have a list of questions prepared beforehand.</p> <p>Some possible questions could be:</p> <ul style="list-style-type: none"> • What kind of education is necessary for your particular job? • Which college or University would you recommend for the study of this discipline? • Are there many jobs available in your area of work? • What would a typical day at work look like for you?

	<ul style="list-style-type: none"> • What motivated you to enter this line of work? <p>Students have a choice of presenting this either on sheets (you may use colored sheets) or through a PowerPoint presentation.</p>
History	<p>Map skills to be practiced.</p> <p>5 questions from each source from chapter 1 and 2 to be made and done in notebook.</p>
Accountancy	<p>1) COMPLETION OF ALL EXERCISE QUESTIONS OF T.S GREWAL IN HOMEWORK REGISTER OF ALL CHAPTERS COMPLETED BEFORE THE HOLIDAYS.</p> <p>2) PROJECT WORK.</p> <p>Project Work</p> <p>1. Collection of source documents, preparation of vouchers, recording of transactions with the help of vouchers.</p> <p>2. Visit any organization and report on the adherence and non-adherence of the Accounting Concepts and conventions.</p> <p style="text-align: center;">OR</p> <p>Visit any organization and report on the following of IND-AS.</p> <p style="text-align: center;">OR</p> <p>Visit any Bank and collect information about the type of accounts, schemes, pay-in-slip, cheques, debit cards, lockers - facilities provided to customers.</p> <p>3. Preparation of Accounting Equation with twenty to twenty-five transactions.</p> <p>Presentation and submission of project report.</p> <p>Each student will prepare and submit his/her project report. Following essentials are required to be fulfilled for its preparation and submission.</p> <p>1. The total project will be in a file format, consisting of the recordings.</p> <p>2. The project will be handwritten.</p> <p>3. The project will be presented in a neat folder.</p> <p>4. The project report will be developed in the following sequence-</p> <p><input type="checkbox"/> Cover page should project the title, student information, school and year.</p> <p><input type="checkbox"/> List of contents (INDEX) showing Section A, Section B and Section C</p> <p><input type="checkbox"/> Acknowledgements and preface (acknowledging the institution, the news papers read, T.V. channels viewed, places visited and persons who have helped).</p> <p><input type="checkbox"/> Introduction.</p>

	<ul style="list-style-type: none"> <input type="checkbox"/> Topic with suitable heading. <input type="checkbox"/> Planning and activities done during the project, if any. <input type="checkbox"/> Observations and findings while conducting the project. <input type="checkbox"/> News paper clippings to reflect any information on the topic chosen.. All documents, pamphlets, proforma of pay-in-slip, cheques etc collected <input type="checkbox"/> Conclusions (summarized suggestions or findings, future scope of study). <input type="checkbox"/> Appendix (if needed).
<p style="text-align: center;">Business Studies</p>	<p>1) PROJECT WORK</p> <p>2) COMPLETION OF ALL QUESTION AND ANSWERS OF NCERT OF THE CHAPTERS COMPLETED BEFORE THE SUMMER HOLIDAYS IN THE HOMEWORK REGISTER.</p> <p>1) PROJECT WORK:</p> <p>Introduction The course in Business Studies is introduced at Senior School level to provide students with a sound understanding of the principles and practices bearing in business (trade and industry) as well as their relationship with the society. Business is a dynamic process that brings together technology, natural resources and human initiative in a constantly changing global environment. With the purpose to help them understand the framework within which a business operates, and its interaction with the social, economic, technological and legal environment, the CBSE has introduced Project Work in the Business Studies Syllabus for Classes XI and XII. The projects have been designed to allow students to appreciate that business is an integral component of society and help them develop an understanding of the social and ethical issues concerning them.</p> <p>This will enable the student to enjoy studies and use his free time effectively in observing what's happening around.</p> <p>By means of Project Work the students are exposed to life beyond textbooks giving them opportunities to refer materials, gather information, analyse it further to obtain relevant information and decide what matter to keep.</p> <p>Objectives After doing the Project Work in Business Studies, the students will be able to do the following:</p> <ul style="list-style-type: none"> <input type="checkbox"/> develop a practical approach by using modern technologies in the field of business and management; <input type="checkbox"/> get an opportunity for exposure to the operational environment in the field of business management and related services; <input type="checkbox"/> inculcate important skills of team work, problem solving, time management, information collection, processing, analyzing and synthesizing relevant information to derive meaningful conclusions <input type="checkbox"/> get involved in the process of research work;

- demonstrate his or her capabilities while working independently and
- Make studies an enjoyable experience to cherish.

Guidelines

The following steps might be followed:

1. **Students must take any one topic.**
2. **The project must be done individually.**

Project One: Field Visit

The objective of introducing this project among the students is to give a firsthand experience to them regarding the different types of business units operating in their surroundings, to observe their features and activities and relate them to the theoretical knowledge given in their text books. The students should select a place of field visit from the following: – (Add more as per local area availability.)

1. Visit to a Handicraft unit.
2. Visit to an Industry.
3. Visit to a Whole sale market. (Vegetables, fruits, flowers, grains, garments, etc.)
4. Visit to a Departmental store.
5. Visit to a Mall.

The following points should be kept in mind while preparing this visit.

1. Select a suitable day free from rush/crowd with lean business hours.
2. It's better to seek permission from the concerned business- incharge.
3. Prepare a worksheet containing points of observation and reporting.
4. Students may carry their cameras (at their own risk) with prior permission for collecting evidence of their observations.

1. Visit to a Handicraft Unit

The purpose of visiting a Handicraft unit is to understand nature and scope of its business, stake holders involved and other aspects as outlined below:

- a) The raw material and the processes used in the business: People /parties/firms from which they obtain their raw material.
- b) The market, the buyers, the middlemen, and the areas covered.
- c) The countries to which exports are made.
- d) Mode of payment to workers, suppliers etc.
- e) Working conditions.
- f) Modernization of the process over a period of time.
- g) Facilities, security and training for the staff and workers.
- h) Subsidies available/ availed.
- i) Any other aspect.

2. Visit to an Industry.

The students are required to observe the following:

- a) Nature of the business organisation.
- b) Determinants for location of business unit.
- c) Form of business enterprise: Sole Proprietorship, Partnership, Undivided Hindu Family, Joint Stock Company (a Multinational Company).
- d) Different stages of production/process
- e) Auxiliaries involved in the process.
- f) Workers employed, method of wage payment, training programmes and facilities available.
- g) Social responsibilities discharged towards workers, investors, society, environment and government.
- h) Levels of management.
- i) Code of conduct for employers and employees.
- j) Capital structure employed- borrowed v/s owned.
- k) Quality control, recycling of defective goods.
- l) Subsidies available/availed.
- m) Safety Measures employed.
- n) Working conditions for labour in observation of Labour Laws.
- o) Storage of raw material and finished goods.
- p) Transport management for employees, raw material and finished goods.
- q) Functioning of various departments and coordination among them (Production, Human Resource, Finance and Marketing)
- r) Waste Management.
- s) Any other observation.

3. Visit to a whole sale market: vegetables/fruits/flowers/grains/garments etc.

The students are required to observe the following:

- a) Sources of merchandise.
- b) Local market practices.
- c) Any linked up businesses like transporters, packagers, money lenders, agents, etc.
- d) Nature of the goods dealt in.
- e) Types of buyers and sellers.
- f) Mode of the goods dispersed, minimum quantity sold, types of packaging employed.
- g) Factors determining the price fluctuations.
- h) Seasonal factors (if any) affecting the business.
- i) Weekly/ monthly non working days.
- j) Strikes, if any- causes thereof.
- k) Mode of payments.
- l) Wastage and disposal of dead stock.
- m) Nature of price fluctuations, reason thereof.
- n) Warehousing facilities available\availed.
- o) Any other aspect.

4. Visit to a Departmental store

The students are required to observe the following:

- a) Different departments and their lay out.
- b) Nature of products offered for sale.
- c) Display of fresh arrivals.
- d) Promotional campaigns.
- e) Spaces and advertisements.
- f) Assistance by Sales Personnel.
- g) Billing counter at store – Cash, Credit Card/ Debit Card, swipe facility. Added attractions and facilities at the counter.
- h) Additional facilities offered to customers
- i) Any other relevant aspect.

5. Visit to a Mall.

The students are required to observe the following:

- a) Number of floors, shops occupied and unoccupied.
- b) Nature of shops, their ownership status
- c) Nature of goods dealt in: local brands, international brands,
- d) Service business shops- Spas, gym, saloons etc.
- e) Rented spaces, owned spaces,
- f) Different types of promotional schemes.
- g) Most visited shops.
- h) Special attractions of the Mall- Food court, Gaming zone or Cinema etc.
- i) Innovative facilities.
- j) Parking facilities.

II. Project Two: Case Study on a Product

a) Take a product having seasonal growth and regular demand with which students can relate. For example,

- Apples from Himachal Pradesh, Kashmir.
- Oranges from Nagpur,
- Mangoes from Maharashtra/U.P./Bihar/Andhra Pradesh etc.
- Strawberries from Panchgani,
- Aloe vera from Rajasthan,
- Walnuts/almonds from Kashmir,
- Jackfruit from South,
- Guavas from Allahabad,
- Pineapples from North East India,
- Tea from Assam,
- Orchids from Sikkim and Meghalaya,
- Pottery of Manipur,
- Fishes from coastal areas.

Students may develop a Case Study on the following lines:

- (i) Research for change in price of the product. For example, apples in Himachal Pradesh during plucking and non plucking season.
- (ii) Effect on prices in the absence of effective transport system.
- (iii) Effect on prices in the absence of suitable warehouse facilities.
- (iv) Duties performed by the warehouses.
- (v) Demand and supply situation of the product during harvesting season, prices near the place of origin and away.

Students may be motivated to find out the importance of producing and selling these products and their processed items along with the roles of Transport, Warehousing, Advertising, Banking, Insurance, Packaging, Wholesale selling, Retailing, Co-operative farming, Co-operative marketing etc

III. Project Three: Aids to Trade

Taking any one AID TO TRADE, for example Insurance and gathering information on following aspects

1. History of Insurance Lloyd's contribution.
2. Development of regulatory Mechanism.
3. Insurance Companies in India
4. Principles of Insurance.
5. Types of Insurance. Importance of insurance to the businessmen.
6. Benefits of crop, orchards, animal and poultry insurance to the farmers.
7. Terminologies used (premium, face value, market value, maturity value, surrender value) and their meanings.
8. Anecdotes and interesting cases of insurance. Reference of films depicting people committing fraudulent acts with insurance companies.
9. Careers in Insurance.

IV. Project Four: Import /Export Procedure

Any one from the following

1. Import /Export procedure

The students should identify a product of their city/country which is imported /exported. They are required to find the details of the actual import/export procedure. They may take help from the Chambers of Commerce, Banker, existing Importers/Exporters, etc. They should find details of the procedure and link it with their Text knowledge.

The specimens of documents collected should be pasted in the Project file with brief description of

each. They may also visit railway godowns/dockyards/ transport agencies and may collect pictures of the same.

V. Project Five: A visit to any State Emporium (other than your school state).

The purpose of this project is that it leads to -

- Development of deeper understanding of the diversity of products in the states like Assam, Tripura, Nagaland, Mizoram, Manipur, Meghalaya, Sikkim, Arunachal Pradesh, Jammu and Kashmir, Kerala, Chhatisgarh, Telangana, Andhra Pradesh and other states of the country.
- Sensitization and orientation of students about other states, their trade, business and commerce,
- Understanding the cultural and socio-economic aspects of the state by the students,
- Developing the understanding of role of folk art, artisanship and craftsmanship of the state in its growth and economic development
- Understanding the role of gifts of nature and natural produce in the development of trade, business and commerce
- Understanding the role of vocational skills and abilities on the livelihood of artisans/ craftsman
- Understanding of entrepreneurial skills and abilities of the artisans/craftsman
- Understanding of the unemployment problem of the state and role of art and craft of the state in generating employment opportunities
- Value aspect -
- Sense of gratitude - by appreciating the contributions made by others in the betterment of our lives
- Appreciating the dignity of work
- Sensitivity towards social, cultural, ethnical and religious differences
- Benefits of social harmony and peace
- Understanding and appreciating the unity in diversity in India
- Appreciating differences in race, skin colour, languages, religion, habits, festivals, clothing coexistence.

Following essentials are required to be fulfilled for its preparation and submission.

1. Nature of the business organisation (emporium)
2. Determinants for location of the concerned emporium
3. Is the space rented or owned

4. Nature of the goods dealt in
5. Sources of merchandise of the emporium
6. Role of co-operative societies in the manufacturing and/or marketing of the merchandise
7. Role of gifts of nature or natural produce in the development of goods/merchandise
8. Types of buyers and sellers
9. Modes of goods dispersed, minimum quantity sold and type of carrying bag or package used
for delivery of the products sold
10. Factors determining the pricing at the emporium
11. Comparison between the prices of goods available at the emporium with the prices in the open market. Also highlight probable causes of variations if any.
12. Kind of raw material available naturally, used in making the products
13. The technique used in making the products i.e., hand made or machine made
14. Has the child labour being used in making the products sold at the emporium
15. Are the products eco-friendly, in terms of manufacturing, disposal and packing
16. Seasonal factors if any affecting the business of the emporium
17. Weekly/ Monthly non-working days
18. Mode of billing and payments - Cash, Credit Card/ Debit Card, Swiipe facility.
19. Does the emporium sell its merchandise in installment / deferred payment basis
20. Do they provide home delivery and after sales services.
21. Different types of promotional campaigns / schemes
22. Assistance by Sales Personnel
23. Export orientation of this emporium and procedure used
24. Policies related to damaged/ returned goods
25. Any government facility available to the emporium
26. Warehousing facilities available / availed
27. Impact of tourism on the business of emporium
28. Additional facility offered to customers
29. Any Corporate Social Responsibility (CSR) assumed by the emporium
30. Contribution made by the emporium to its locality.

Presentation and submission of project report.

At the end of the chosen visit, each student will prepare and submit his/her project report.

Following essentials are required to be fulfilled for its preparation and submission.

1. The total project will be in a file format, consisting of the recordings.

	<p>2. The project will be handwritten.</p> <p>3. The project will be presented in a neat folder.</p> <p>4. The project report will be developed in the following sequence-</p> <ul style="list-style-type: none"> <input type="checkbox"/> Cover page should project the title, student information, school and year. <input type="checkbox"/> List of contents(INDEX) <input type="checkbox"/> Introduction. <input type="checkbox"/> Topic with suitable heading. <input type="checkbox"/> Planning and activities done during the project, if any. <input type="checkbox"/> Observations and findings while conducting the project. <input type="checkbox"/> News paper clippings to reflect any information on the topic chosen. <input type="checkbox"/> Conclusions (summarised suggestions or findings, future scope of study). <input type="checkbox"/> Appendix. (the news papers read, T.V. Channels viewed, places visited, WEBSITES and persons who have helped).
<p>Political Science.</p>	<p>1. Read one of the two books: -</p> <ul style="list-style-type: none"> a) Long Walk to Freedom by Nelson Mandela. b) Freedom from Fear by Aung San Suu Kyi. <p>The books will be discussed in class after school reopens.</p> <p>2) Prepare a presentation, in the form of PowerPoint on any of the following topics: - (Students are expected to do research on the chosen topic and put the points in a creative and thoughtful way). Interpretation (their own view points) by students should follow the presentation. Sources are to be mentioned.</p> <ul style="list-style-type: none"> a) Freedom. b) Equality. c) Peace. d) Nationalism. e) Secularism. <p>3) Read newspaper everyday and keep one article a day with some reference to fundamental rights. Make a collage of the articles collected (follow instructions as explained in the class).</p> <p>4) Primary data for the project topic has to be collected over the holidays. (To follow instructions as explained in the class).</p>

